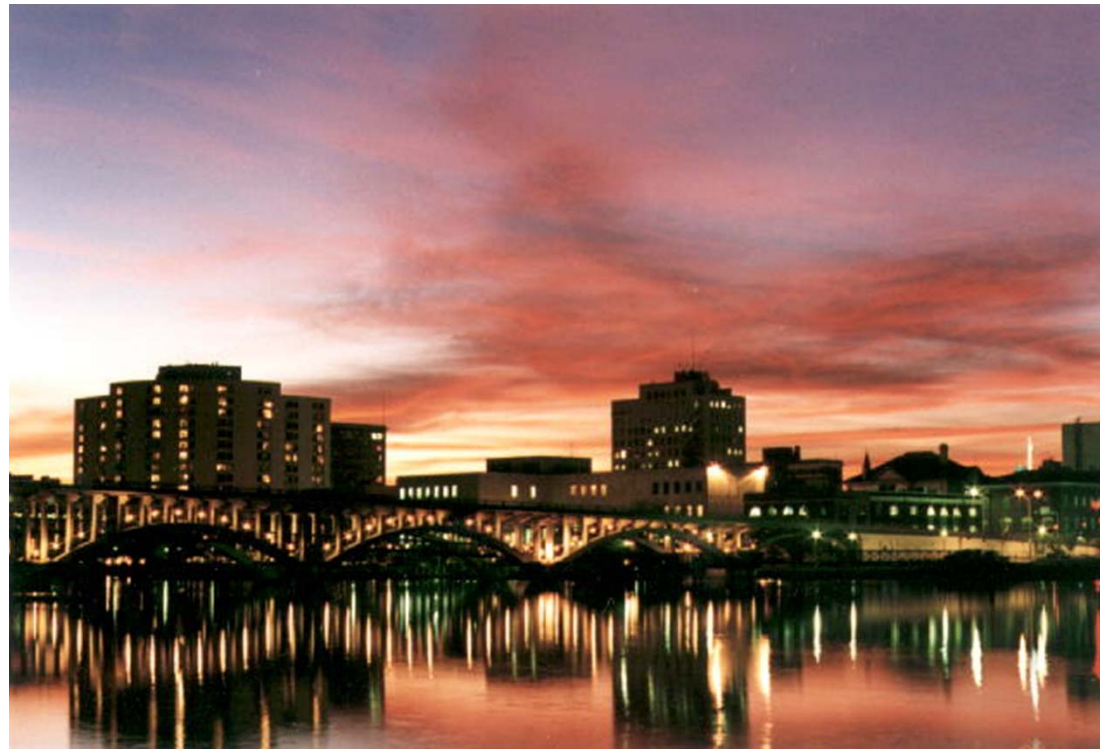


The Rockford Area

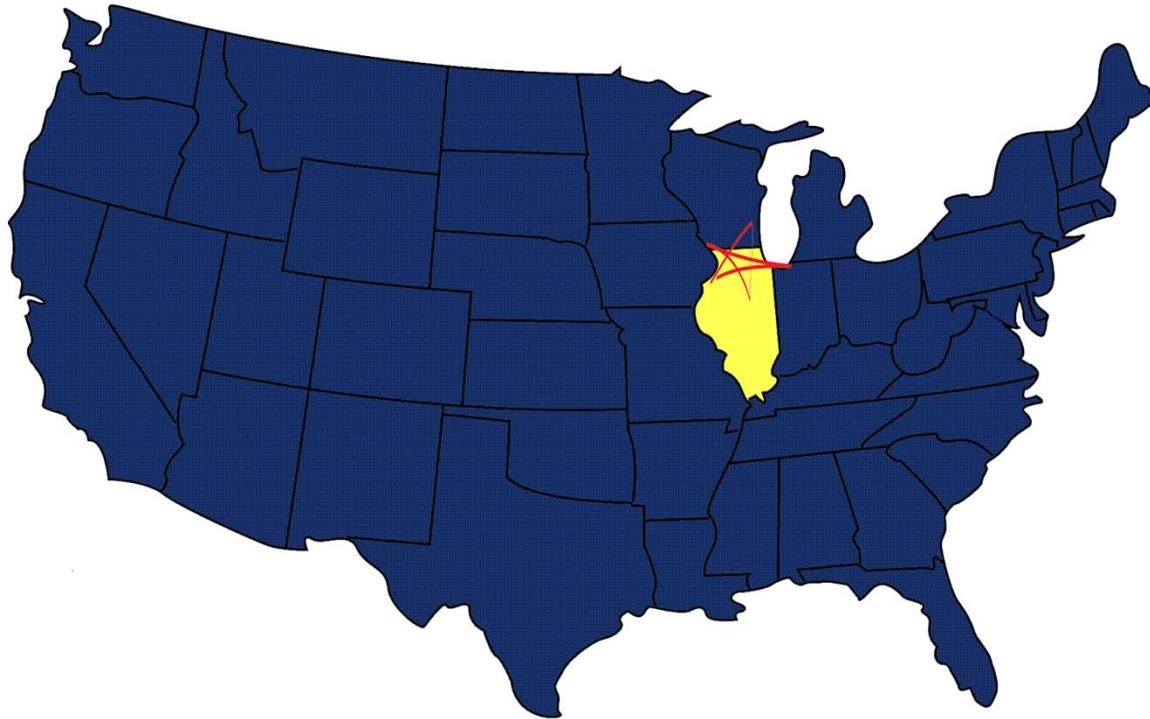
Mid-America's Best Mid-Sized
International Community



Well Located with Excellent Access

In the World, Illinois has:

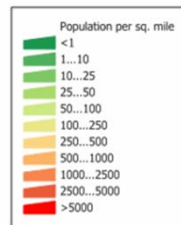
- 2nd busiest airport (O'Hare International)
- 3rd largest multi-modal port system



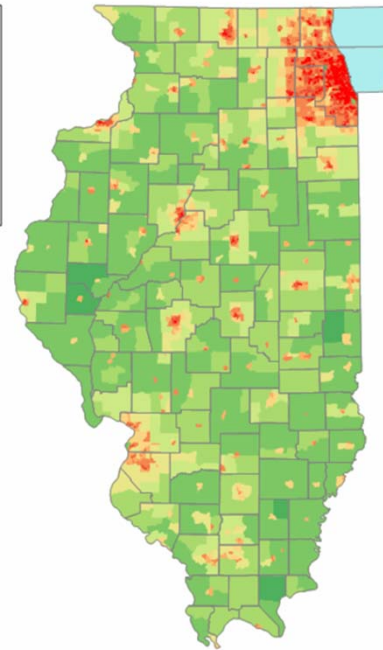
Well Located with Excellent Access

In the US, Illinois is:

- 1st in interstate & railroad connections
- 4th in technology & innovation
- 5th largest economy (\$589b)
- 5th most populated state



Source: U. S. Census Bureau
Census 2000 Summary File 1
population by census tract.

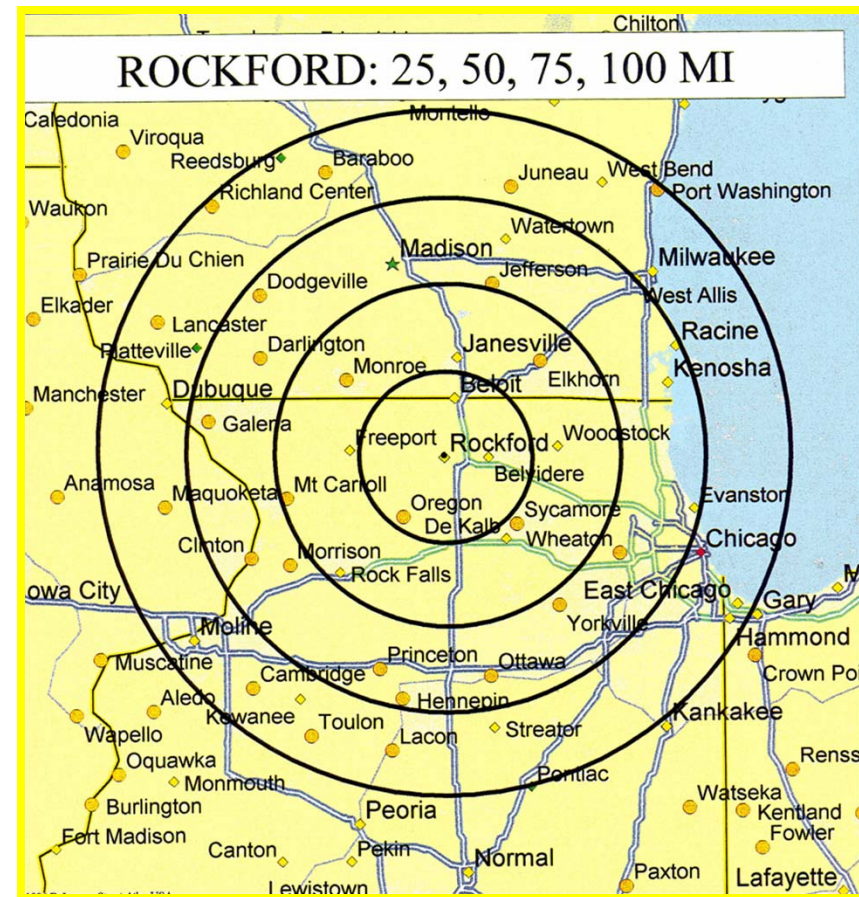


Part of the Chicago Market

A strategic location:

- 800,000+ people within 30-40 minute commute
- Fastest growing region in Illinois
- 60 minutes to O'Hare International
- 90 minutes to Chicago's Center Business District
- 13+ million people within 2-hour drive
- 80% of US households within 24-hour truck drive

Rockford is the 2nd largest central city in Illinois!



Industry Leading Center of Metal Working Excellence

Concentrated Manufacturing Talent > National Average:

- 7.2 x Machinery Manufacturing employment and R&D
- 4.2 x Metals Manufacturing and R&D
- 3.4 x Transportation Equipment Manufacturing and R&D
- 1.5 x above IL engineers
- 1.3 x above US engineers

Leading Manufacturing Community in Illinois

- 1st in aerospace manufacturing
- 2nd in manufacturing employment
- 2nd in “on & off” road vehicle manufacturing
- 2nd in industrial machine manufacturing

Nearly 25% of the Rockford area's workforce is employed in manufacturing, 2x the national average.



Rockford's Target Industries

Industries that best fit Rockford's strengths and services:

- Aerospace Manufacturing and R&D
- Automotive Manufacturing and R&D
- Rail Manufacturing and R&D
- Industrial Machinery Manufacturing and R&D
- Logistics and Distribution
- Back Office Operations
- Metals Manufacturing and R&D
- Food Processing
- Chemicals & Plastics Manufacturing
- Health Care Related Service



Abundant Qualified Available Labor Force



Labor Availability - Pathfinders Report (2007)

- 30-minute labor-shed population of 800,000+
- Estimated workforce of 435,000+ people
 - 65,500 underemployed
 - 16,800 unemployed
 - 46,200 employed but interested in changing employers
 - 2,500 considering re-entering workforce

Commuting Workforce - Pathfinders Analysis (2007)

- 42,600 commute out of Rockford Metro
 - 73% considering taking a comparable job in Metro
 - 15% of these are tied to manufacturing

May, 2011 Metro Unemployment: 10.7%

Rockford is the fastest growing Metro Area in Illinois.



Good Labor Relations

Metro labor quality rated above average in:

- Turnover
- Absenteeism
- Productivity
- Attitude
- Drug use
- Trainability
- Communications
- Basic skills

Labor availability rated above average for:

- Engineering
- Skilled
- Semi-skilled
- Unskilled



Abundant Educational Opportunities

75+ universities in region offering advanced aerospace & engineering degrees...



Growing Available In-Land Port

Integration of Air Cargo, Truck, & Rail Service:

- 21st largest air cargo airport in the U.S.
- Access to 4 interstates
- 4 of 7 class-one railroads
- 60+ motor freight carriers
- 2 of the largest air cargo aggregators
- UP's Global III Intermodal Facility
- WATCO's multi-product transload facility



Chicago's Third International Airport

Modern Facility

- 24/7 FAA Air Traffic Control Tower
- Hard-surface runways
 - 10,000 ft (Primary)
 - 8,200 ft (Secondary)
- Cat III/II Instrument Landing System
 - allows landing in zero visibility conditions
- International Arrival Gate
- U.S. Customs Port of Entry
- De-icing fluid retention and processing facility on-site



RFD is the 21st largest air cargo airport in the U.S., moving more cargo than than BOS, SEA, PHX, and PDX!



Leading Air Cargo Services

UPS

- 3rd largest global hub
- 2nd largest US air hub
- 2-shift next day air service
- Multiple daily flights
- Six expansions since 1994 – 570,000 sq ft
 - \$25m invested to increase throughput (2007)
 - \$7.5m added heavy freight (2006)



DB Schenker

- Began service at RFD in 2000
- 25,000 sq ft regional sort facility
- Multiple daily flights



Available Air Cargo Center on Runway

Full Build-Out

- 400,000 sq ft
- 30 acres
- 14-747 size spaces

Phase One:

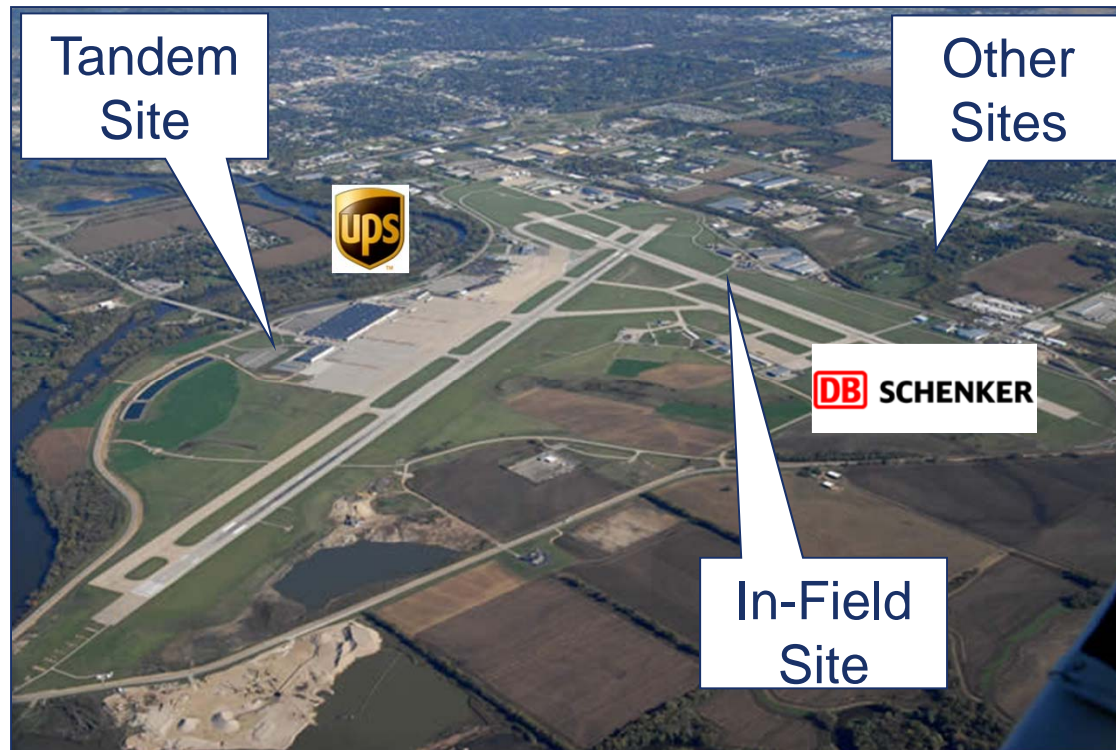
- Building Size: 72,000 sq ft
- Clear Height: 28 ft
- Aircraft Parking: to suit
- Electrical: 1200 Amps, 480/277 Volts
- Parking: 100 cars - expandable
- Trailer Parking: available
- Drive-In Doors: 4 - grade level, 16' x 20'
- Exterior Truck Docks: 20 - fully equipped
- Occupancy: available now
- Build-out: to suit



Multiple Development Opportunities

RFD

Multiple sites available
Direct runway access



Interstate Access Development

Rock Aero Park

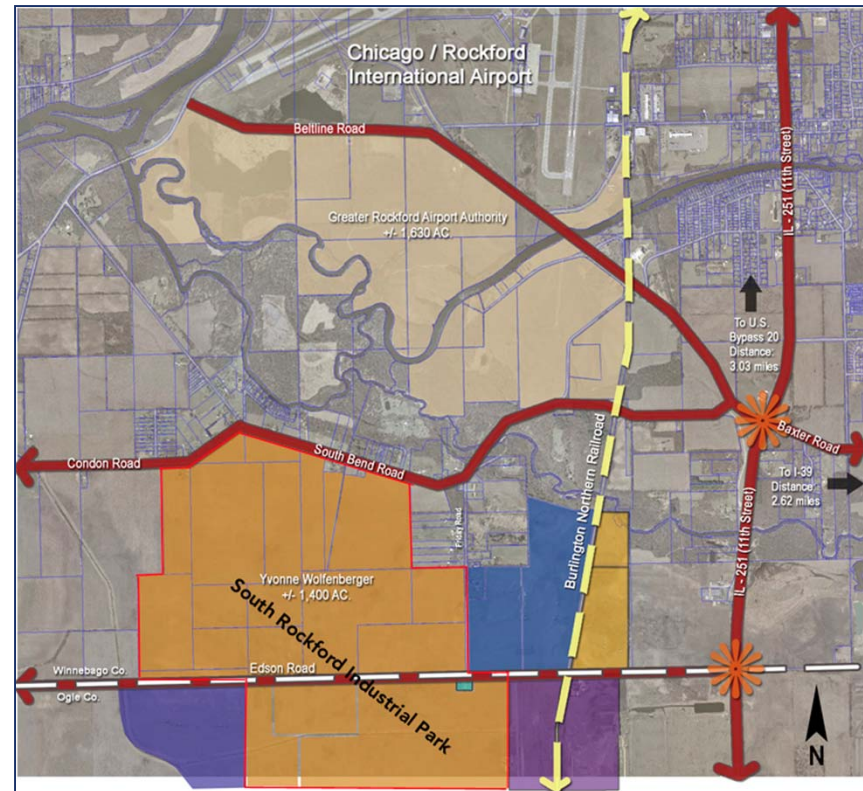
- 168 acre development at entrance to Chicago/Rockford International Airport
- TIF & Enterprise Zone Benefits
- Interstate/US Highway visibility
- Ideal for non-airside airport uses, corporate, commercial, warehouse & distribution and light manufacturing



Heavy Industry and Rail Served Development

South Winnebago County Industrial Park

- 1,500 acres
- Rail Served: ICE, Illinois Railway, UP, BNSF, CN, CP
- Ideal for heavy/rail-oriented manufacturing, rail-related distribution, warehouse & distribution, rail services, and alternative energy production



Superior Affordable Quality of Life

- 7,000+ parkland acres
- 85 public parks
- 21 public golf courses
- 6 country clubs
- 9 public libraries
- 10 museums
- 12 art galleries
- 1 symphony orchestra
- 4 community theatres
- 2 indoor ice arenas
- 2 water parks
- 4th lowest cost of living in the Midwest



Rockford is home to the Rockford IceHogs AHL hockey team, official affiliate for the NHL Chicago Blackhawks, 2010 Stanley Cup Champions.



Global Focus

- FTZ #176
- 9 Sister Cities
- USEAC office
- Immigration Services
- International Gate at Airport
- Top 4% in ethnic diversity in Illinois
- Export growth of 52% from 2005-2008
- Illinois SBDC International Trade Center
- 35+ languages spoken in Rockford Area schools
- Hosted 7 international trade delegations in 2010
- Participated in 3 international trade missions in 2010
- Immigration through Investment EB-5 Visa Regional Center
- 100+ companies from 20+ countries invest in the Rockford Area



We welcome you to join this growing international region!



Rockford

I L L I N O I S  U S A

ROCKFORD AREA ECONOMIC DEVELOPMENT COUNCIL

Carrie Zethmayr
Manager of International Relations and Client Solutions
815-969-4263
czethmayr@rockfordil.com

