

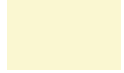


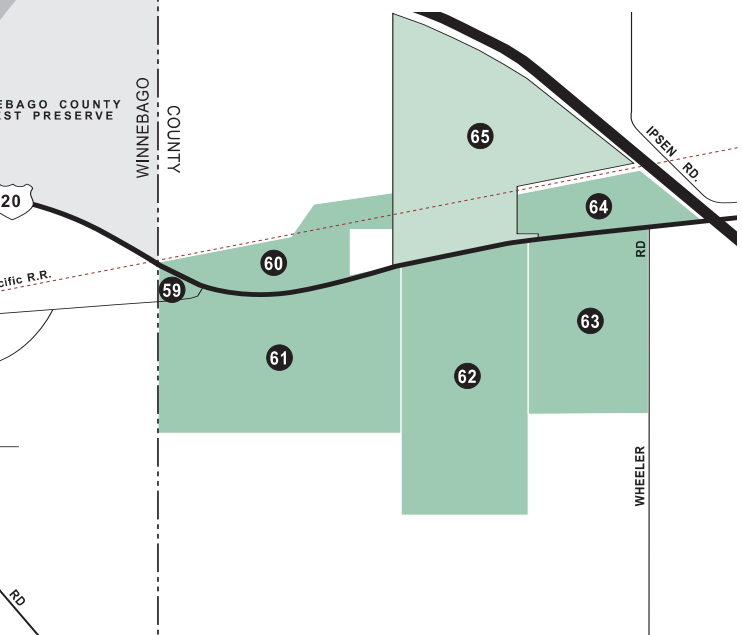
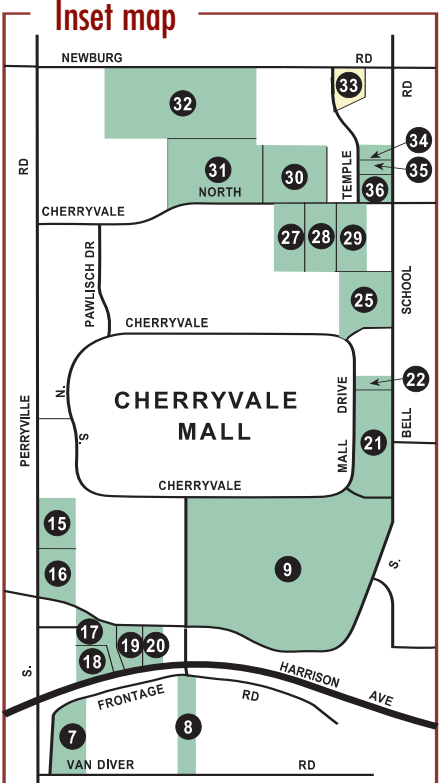
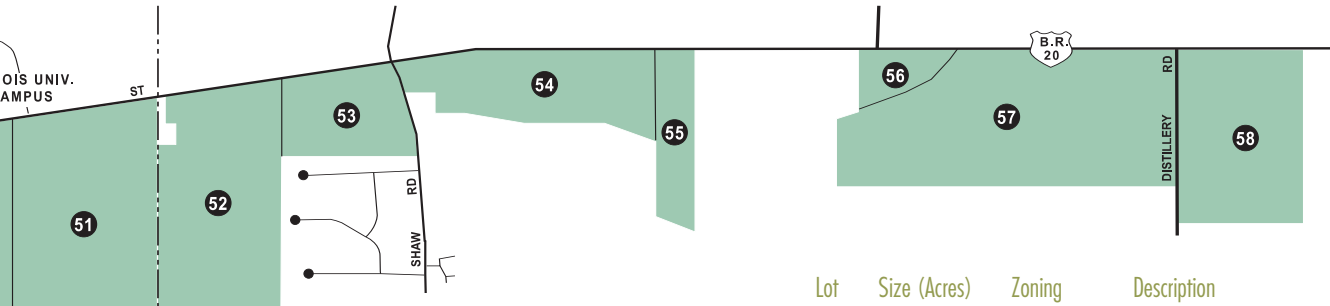
Commercial Land Directory

Legend

-  Commercial
-  Industrial
-  Office

Prepared by the Center for Governmental Studies
at Northern Illinois University
March, 2001





Lot	Size (Acres)	Zoning	Description
1	100.49	"AG"	General Industrial Potential
2	94.92	"AG"	Light Industrial Potential
3	20.00	"CG"	Commercial General
4	85.00	"CG"	Commercial General
5	46.02	"CG"	Office and Commercial
6	20.45	"CG"	Commercial General
7	2.55	"CG"	Commercial General
8	1.60	"CC"	Commercial Community
9	21.17	"CC"	Commercial Community
10	2.14	"CG"	Commercial General
11	0.90	"CG"	Commercial General
12	1.27	"CG"	Commercial General
13	1.02	"CG"	Commercial General
14	0.90	"CG"	Commercial General
15	1.23	"CG"	Commercial General
16	0.98	"CG"	Commercial General
17	1.01	"CG"	Commercial General
18	1.35	"CG"	Commercial General
19	0.84	"CG"	Commercial General
20	1.05	"CG"	Commercial General
21	6.96	"CC"	Commercial Community
22	1.22	"CC"	Commercial Community
23	70.00	"CC"	Commercial Community
24	109.00	"AG"	Office Potential
25	5.00	"CC"	Commercial Community
27	2.00	"CC"	Commercial Community
28	2.00	"CC"	Commercial Community
29	2.00	"CC"	Commercial Community
30	4.17	"CC"	Commercial Community
31	10.38	"CC"	Commercial Community
32	14.20	"CC"	Commercial Community
33	0.70	"OF"	Office
34	0.60	"CC"	Commercial Community
35	0.60	"CC"	Commercial Community
36	1.00	"CC"	Commercial Community
37	80.00	"AG"	Commercial/Office/Res. Potential
38	15.70	"OF"	Office
39	5.53	"CN"	Commercial Neighborhood
40	1.35	"OF"	Office
41	0.94	"OF"	Office
42	5.62	"OF"	Office
43	38.56	"CG"	Commercial General
44	2.70	"CG"	Commercial General
45	20.10	"CC"	Commercial Community
46	7.80	"CC"	Commercial Community
47	22.77	"CC"	Commercial Community
48	56.51	"AG"	Commercial/Office Potential
49	1.65	"CG"	Commercial General
50	1.80	"CG"	Commercial General
51	24.36	"CG"	Commercial General
52	37.72	"CG"	Commercial General
53	20.00	"CG"	Commercial General
54	33.27	"CG"	Commercial General
55	17.31	"CG"	Commercial General
56	6.36	"CG"	Commercial General
57	69.57	"CG"	Commercial General
58	49.16	"CG"	Commercial General
59	1.20	"CG"	Commercial General
60	25.00	"CG"	Commercial General
61	128.00	"CG"	Commercial General
62	108.00	"CG"	Commercial General
63	72.00	"CG"	Commercial General
64	21.40	"CG"	Commercial General
65	70.00	"IL"	Light Industrial Potential