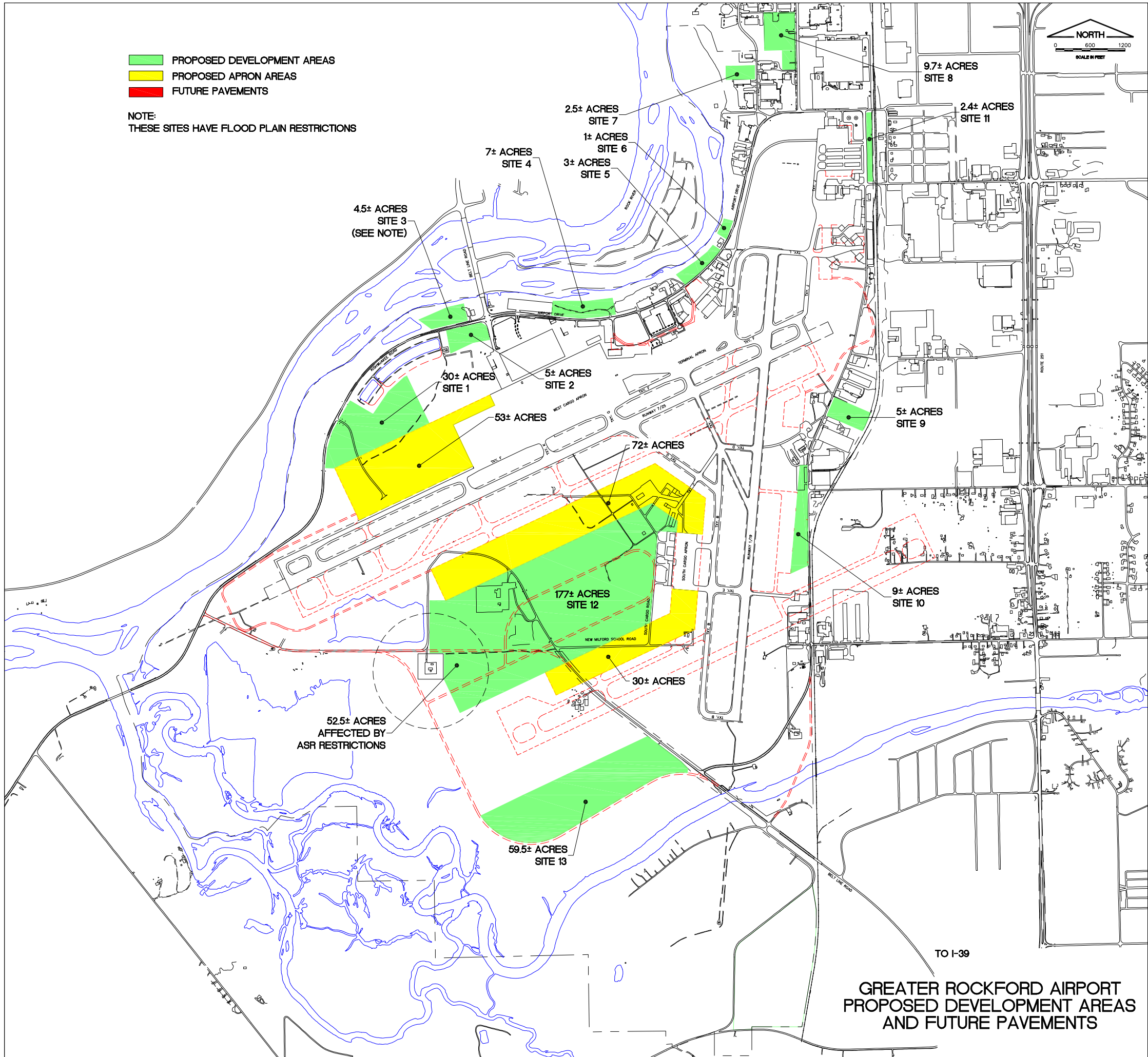


- PROPOSED DEVELOPMENT AREAS
- PROPOSED APRON AREAS
- FUTURE PAVEMENTS

NOTE:
THESE SITES HAVE FLOOD PLAIN RESTRICTIONS



GMT
GRIFFIN, MURPHY & TULLY, INC.
CONSULTING ENGINEERS
LICENSE NUMBER: 184-000413

- Springfield, Illinois
- Aurora, Illinois
- Rockford, Illinois
- Peoria, Illinois
- St. Louis, Missouri

G:\Logos\GRAA LOGO.jpg

PATH: s:\3089RAA\012501\
FILE: AIRFIELD DEVELOPMENT.dwg
UPDATE BY: Chris Summers
SURVEY BOOK #
XREF DWG:
XREF DWG:
DATE: Wed 7/25/01 1:16pm

0 1 2
THIS BAR IS EQUAL TO 2"
AT FULL SCALE (34X22).

REVISIONS		
NO.	BY	DATE
1	AGJ	01/14/03

DESIGN BY:
DRAWN BY:
CHECKED BY:
APPROVED BY:
DATE: 7/25/01
JOB No: 01258-01
SHEET

TO I-39
**GREATER ROCKFORD AIRPORT
PROPOSED DEVELOPMENT AREAS
AND FUTURE PAVEMENTS**