

# The Rockford Area

---

## Mid-America's Best International Aerospace Community

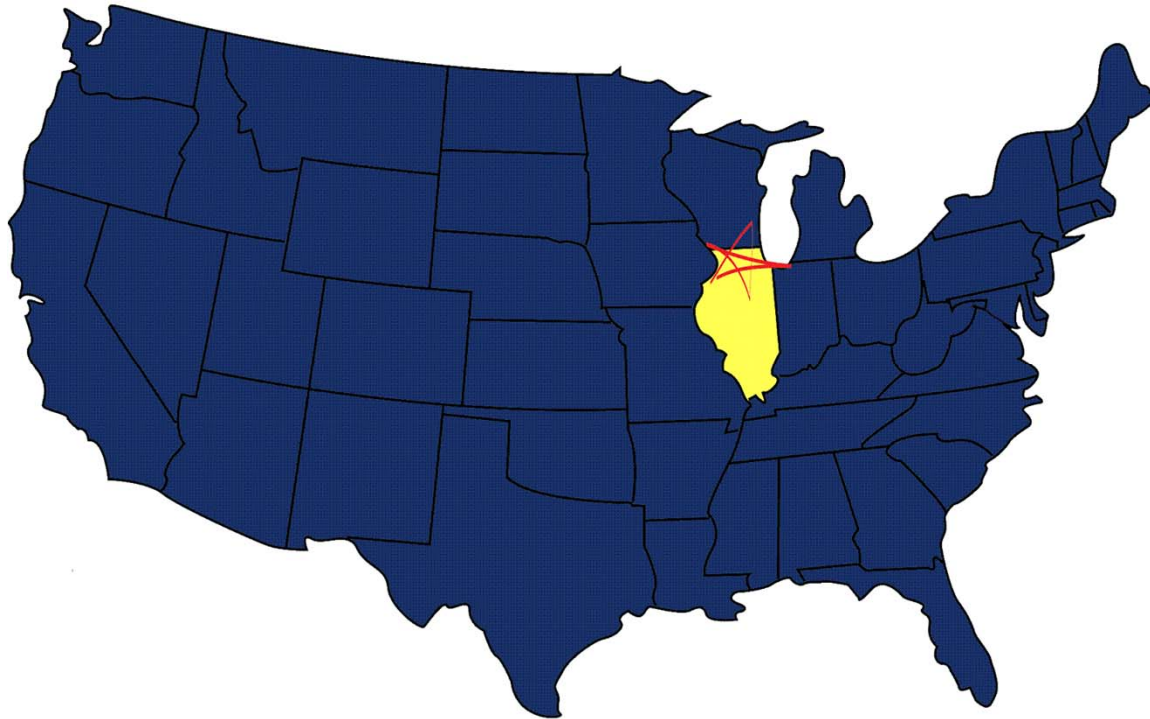


# Well Connected to the World

---

## In the World, Illinois is:

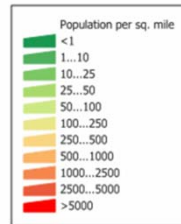
- 2<sup>nd</sup> busiest airport (O'Hare International)
- 3<sup>rd</sup> largest multi-modal port system



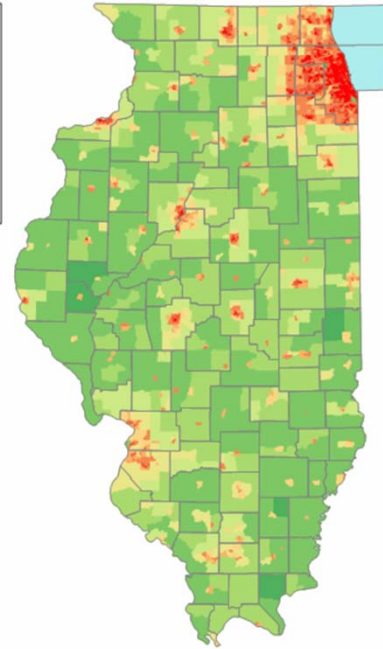
# Well Located with Excellent Access

## In the US, Illinois is:

- 1<sup>st</sup> in interstate & railroad connections
- 5<sup>th</sup> largest economy
- 5<sup>th</sup> most populated state
- 7<sup>th</sup> in Air Cargo Tonnage
- 8<sup>th</sup> in Aerospace Start-Ups
- 12<sup>th</sup> in Aviation maintenance employment
- 13<sup>th</sup> in Aerospace employment
- 14<sup>th</sup> in technology & innovation



Source: U. S. Census Bureau  
Census 2000 Summary File 1  
population by census tract.

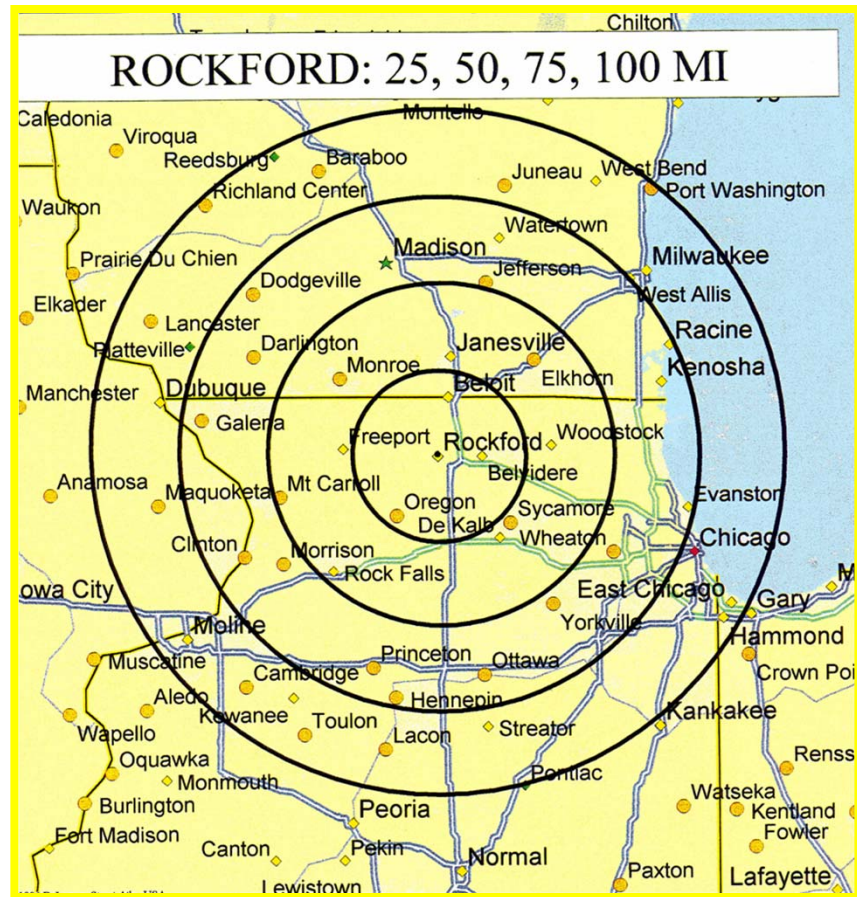


# Part of Chicago/Milwaukee Market

## A strategic location:

- 800,000+ people within 30-40 minute commute
- One of the fastest growing regions in Illinois
- 60 minutes to O'Hare International
- 90 minutes to Chicago's Center Business District
- 13+ million people within 2-hour drive
- 80% of US households within 24-hour drive

*Rockford is the 2nd largest central city in Illinois!*



# Well Connected to North America

“I-39 has the distinct advantage of being the only interstate connecting the northern cluster of interstates (I-90, I-94, I-80, I-88) with the central cluster of interstates in Illinois (I-74, I-55, I-70, I-57, I-64)....

...As a result the highway system of the I-39 corridor is one of the most connected in the country for both domestic and international trade.”

*--St. Onge Co.*



# Quick Access to Midwest Market

Strategically located with 500-mile access to:

- Illinois
- Wisconsin
- Minnesota
- Michigan
- Indiana
- Missouri
- Iowa
- Ohio
- Kentucky
- Ontario, Canada



# Accessible In-Land Port

---

## Integration of Air Cargo, Truck, & Rail Service:

- 24th largest air cargo airport in the U.S.
- Direct Access to 4 interstates
- 4 of 7 class-one railroads
- 60+ motor freight carriers
- UPS' 2<sup>nd</sup> largest Air Hub in U.S.
- UP's largest Intermodal Facility Global III
- WATCO's multi-product transload facility



CANADIAN PACIFIC



# Robust Aerospace/Aviation Cluster

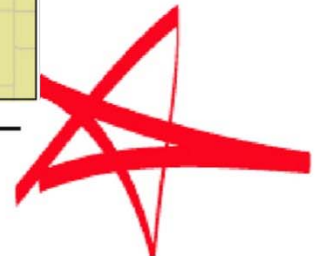
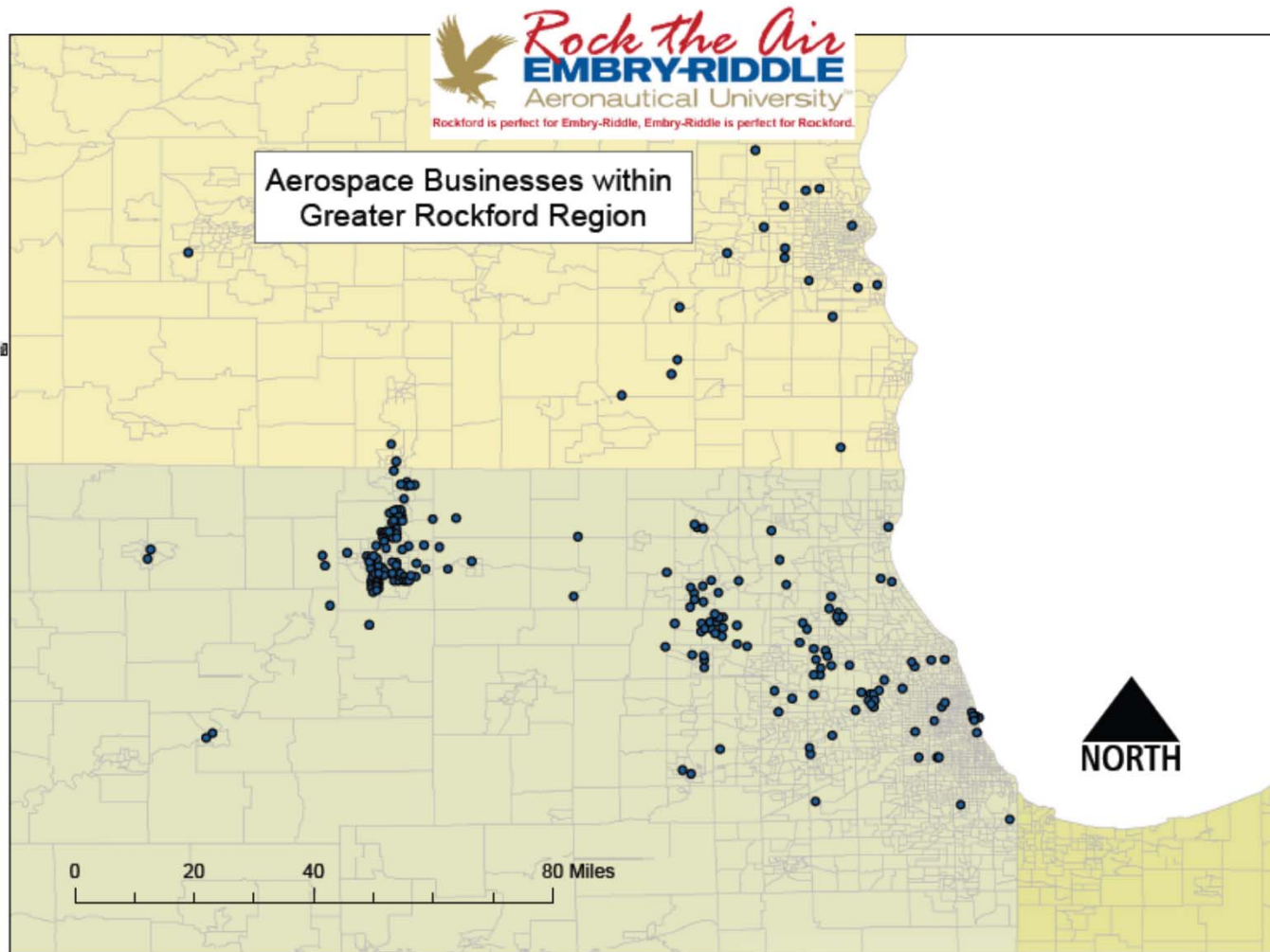
---

200+ companies, including 4 tier-one suppliers, in greater Rockford area supply products to the global aerospace industry. Making the region one of the largest clusters in the US. Attracting new investment & expansions of current companies, including...





# Robust Aerospace/Aviation Cluster



# Robust Aerospace/Aviation Cluster

---

Rockford's cluster demonstrates technological strength in products for military, commercial and space vehicles:

- Global Leader in design & manufacture of engine control systems
- Global Leader in electric power generation, distribution and control systems
- Fuel & special fluid pumps
- Gearboxes
- Movement of spare or component parts, globally

Rockford aerospace supply chain provides:

- Advanced materials and composites
- Maintenance, Repair and Overhaul
- Parts & Components distribution and production
- Sheet metal
- Software systems
- Systems design and engineering support
- Tooling
- And other products and services



# Additional Aerospace Capabilities

---

## Our diverse aerospace cluster allows for:

- Advanced Manufacturing/production
- Advanced Materials and Composite
- Aviation R&D and Testing
- Continuing Education
- Maintenance Repair Overhaul
  - Structural, turbine/engine
  - Systems: gyros & hydraulics
  - Small structural, turbine/engine
  - Paint
  - Gauges/Calibration
  - Seats & flotation devices
- Parts & Components Warehouse/Distribution & Logistics
- Power Management/Distribution & Engine Control
- Rapid Prototyping
- Sheet metal
- Software systems
- Systems design and engineering support
- Tooling
- And other products and services



# Industry Leading Center of Metal Working Excellence

---

## Concentrated Manufacturing Talent above National Average:

- 6.7 x Machinery Manufacturing employment and R&D
- 4.3 x Metals Manufacturing and R&D
- 3 x Transportation Equipment Manufacturing and R&D
- Over 4000 engineers
  - 1.5 x above IL engineers
  - 1.3 x above US engineers
  - Significant Patent Activity

## Leading Manufacturing Community in Illinois

- 1<sup>st</sup> in aerospace manufacturing with 80% of Illinois workforce
- 2<sup>nd</sup> in manufacturing employment
- 2<sup>nd</sup> in “on & off” road vehicle manufacturing
- 2<sup>nd</sup> in industrial machine manufacturing

*Nearly 25% of the Rockford area's workforce is employed in manufacturing, twice the national average.*



# Rockford Area Aerospace Network

---

RAAN has been created as a committee of the RAEDC to develop strategic initiatives to impact and improve the aerospace business climate of the Rockford Area, responding to the needs identified by our local aerospace cluster and the key site selection needs of aerospace companies.



# Abundant Educational Opportunities

---

Over 75 colleges and universities within 90-minute drive, many offering advanced engineering degrees, including aerospace...

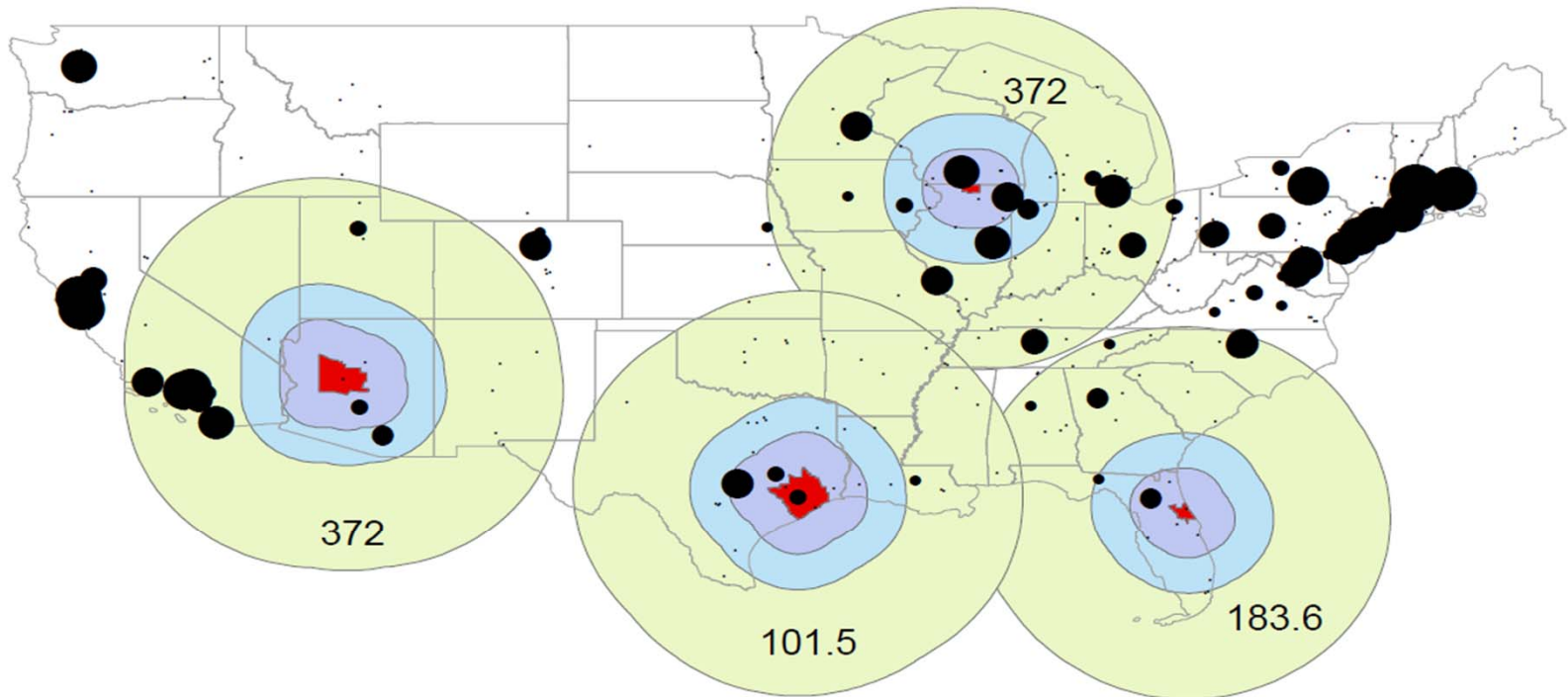


**15.6 million 15-24 year olds within 500 miles**



# Quality Educational Opportunities

Academic Ranking of Leading World Research Universities  
Total Scores within 500 Mile Radius



**NORTH**

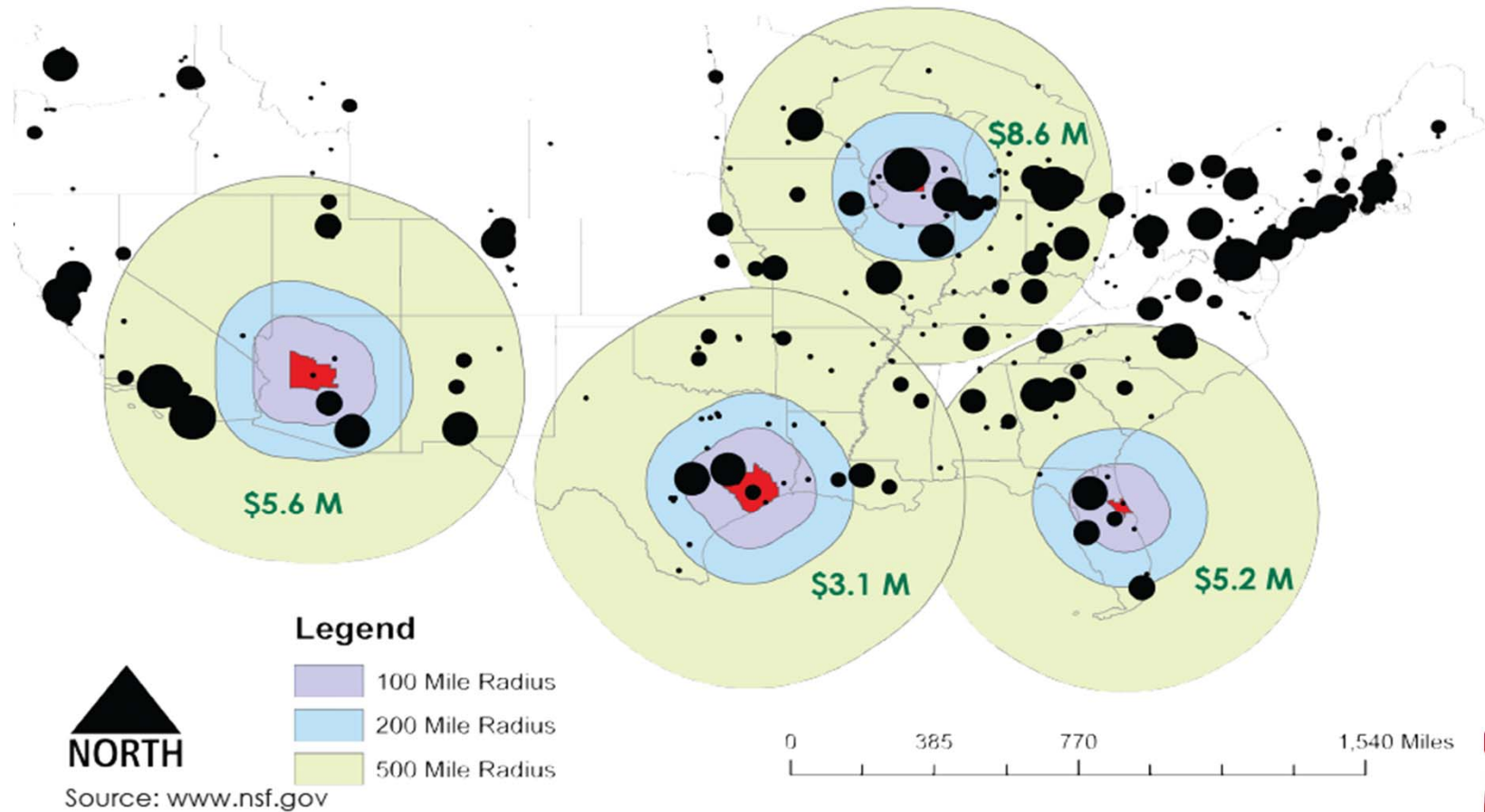
Source: [www.arwu.org](http://www.arwu.org)

0 420 840 1,680 Miles



# A Living Laboratory

Total Research Dollars Spent in Engineering and Science at Higher Education Institutions





# Leading International Airport

---

## The Chicago/Rockford International Airport (RFD)

- 24<sup>th</sup> largest cargo airport in the US
- One of first in U.S. to get approval for 747-8 operations
- Named best cargo airport in its class in 2012 by Air Cargo World



## Modern Facility

- 24/7 FAA Air Traffic Control Tower
- Hard-surface runways
  - 10,000 ft (Primary)
  - 8,200 ft (Secondary)
- Cat II/III Instrument Landing System (ILS)
  - allows landing in near zero visibility conditions
- International Arrival Gate
- U.S. Customs Port of Entry
- De-icing fluid retention and processing facility on-site



# Superior Aviation Amenities

---

## Capabilities

- Independent airspace from O'Hare, Midway, Chicago/Gary, Mitchell Field (Milwaukee)
- Accommodates largest aircrafts flying
  - Airbus 380
  - Antonov An-225
  - Boeing 747-8
- Capable of non-stop service to Europe, Africa, Asia, Middle East & South America

## Services

- Foreign Trade Zone Benefits (FTZ #176)
- 24/7 customs & federal inspections
- Multiple FBO's = full spectrum of aviation related services
- USDA inspections
- 6,600 acres in Global Trade Park
  - 3,000+ acres of airport land for development
  - 325+ airside acres
  - 2000+ acres for industrial & commercial projects

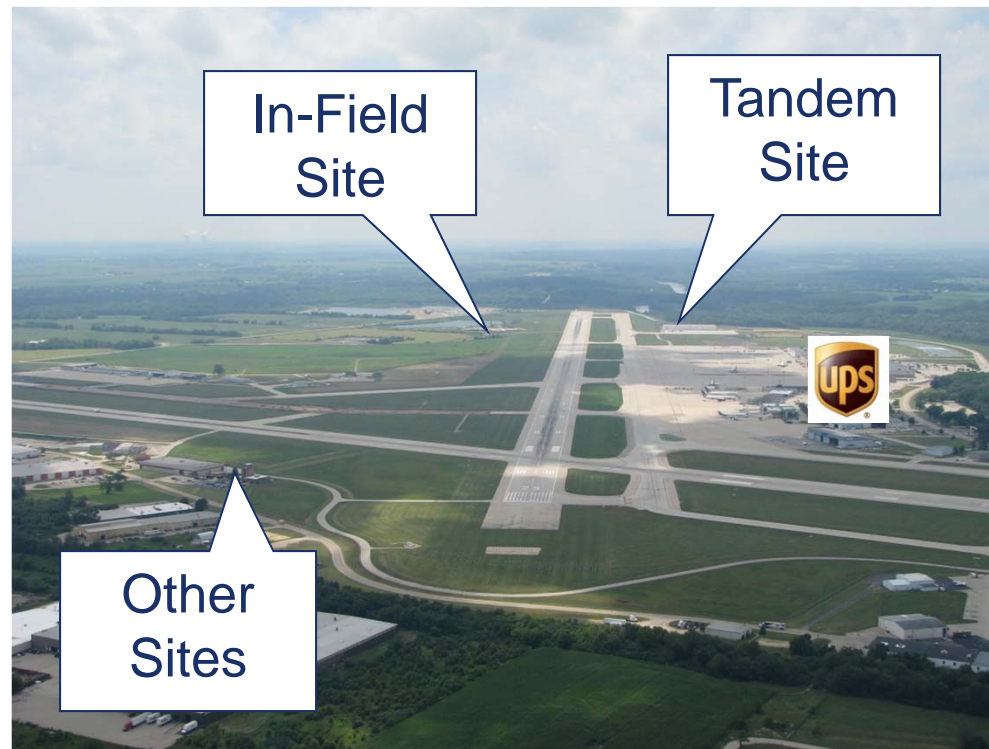


# Multiple Development Opportunities

---

RFD

Direct Runway Access  
Multiple Developed Sites Available



# Available Industrial Building on Runway

## Full Build-Out

- 400,000 sq ft
- 30 acres
- 14-747 size pads/spaces

## Phase One:

- Building Size: 72,000 sq ft
- Clear Height: 28 ft
- Aircraft Parking: to suit
- Electrical: 1200 Amps, 480/277 Volts
- Parking: 100 cars - expandable
- Trailer Parking: available
- Drive-In Doors: 4 - grade level, 16' x 20'
- Exterior Truck Docks: 20 - fully equipped
- Occupancy: available now
- Build-out: to suit



# Interstate Access Development

---

## RockAero Park

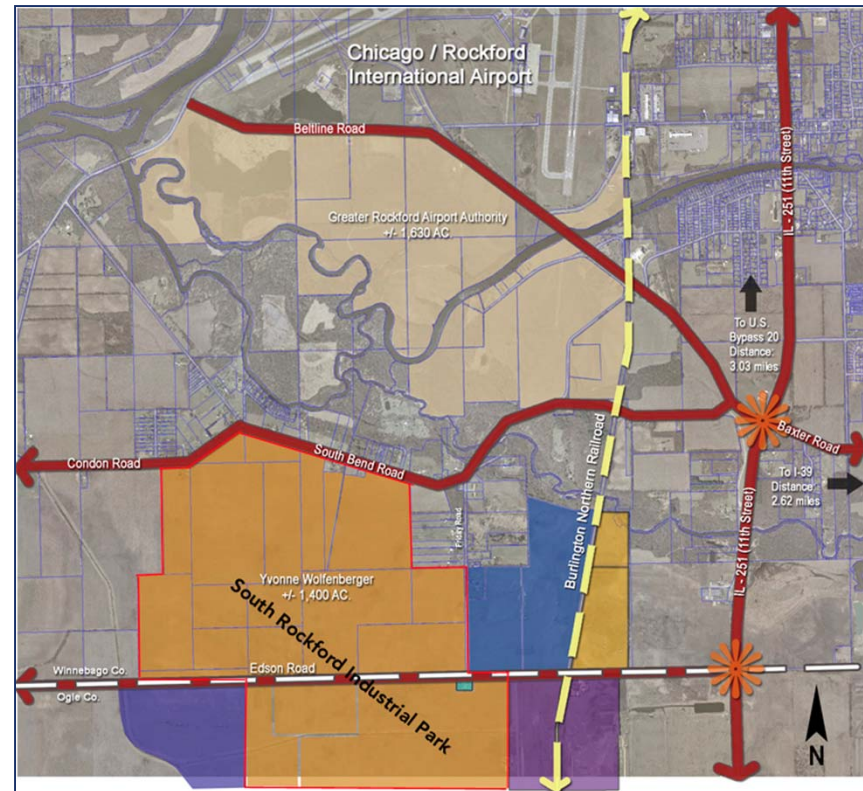
- 168 acre development at entrance to Chicago Rockford International Airport
- Development Ready
- Interstate/US Highway visibility
- TIF & Enterprise Zone Benefits
- Ideal for non-airside airport uses, corporate, commercial, warehouse & distribution and light manufacturing



# Heavy Industry and Rail Served Development Sites

## South Winnebago County Industrial Park

- 1,500 acres
- Rail Served: Illinois Railway, ICE, UP, BNSF, CN, CP
- Heavy Utilities in place
- Four lane Illinois highway
- Alternative Energy Options
- Ideal for heavy/rail-oriented manufacturing, rail-related distribution, warehouse & distribution, rail services, food & chemical processing and alternative energy production



# Superior Affordable Quality of Life

---

- 7,000+ parkland acres
- 85 public parks
- 21 public golf courses
- 6 country clubs
- 9 public libraries
- 10 museums
- 12 art galleries
- 1 symphony orchestra
- 4 community theatres
- 2 indoor ice arenas
- 2 water parks
- Ski Resorts
- 4<sup>th</sup> lowest cost of living in the Midwest



***Rockford is home to the Rockford IceHogs AHL hockey team, official affiliate for the NHL Chicago Blackhawks, 2010 Stanley Cup Champions.***



# Global Focus

---

- FTZ #176
- 9 Sister Cities
- Immigration Services
- International Gate at Airport
- U.S. Export Assistance Center
- Top 4% in ethnic diversity in Illinois
- Export growth of 25% from 2005-2010
- Illinois SBDC International Trade Center
- 63<sup>rd</sup> most export intensive GMP in the U.S.
- 35+ languages spoken in Rockford Area schools
- Hosted 6 international trade delegations in 2011
- Participated in 2 international trade missions in 2011
- Immigration through Investment EB-5 Visa Regional Center
- 100+ companies from 20+ countries invest in the Rockford Area
- Projected export growth of 70.5% by 2020 – 32<sup>nd</sup> highest in nation.



*We welcome you to our growing international region!*





# Rockford

I L L I N O I S  U S A

ROCKFORD AREA ECONOMIC DEVELOPMENT COUNCIL

Eric D. Voyles  
Vice President National Business Development  
815-987-8118  
evoyles@rockfordil.com

