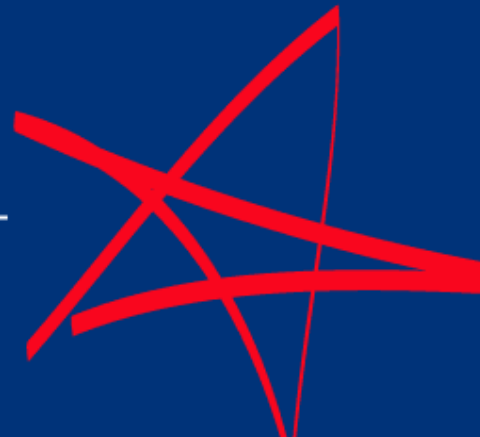


# Mid America's Best Aerospace Region



---

ROCKFORD AREA ECONOMIC DEVELOPMENT COUNCIL



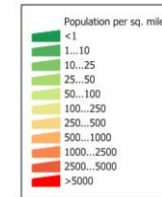
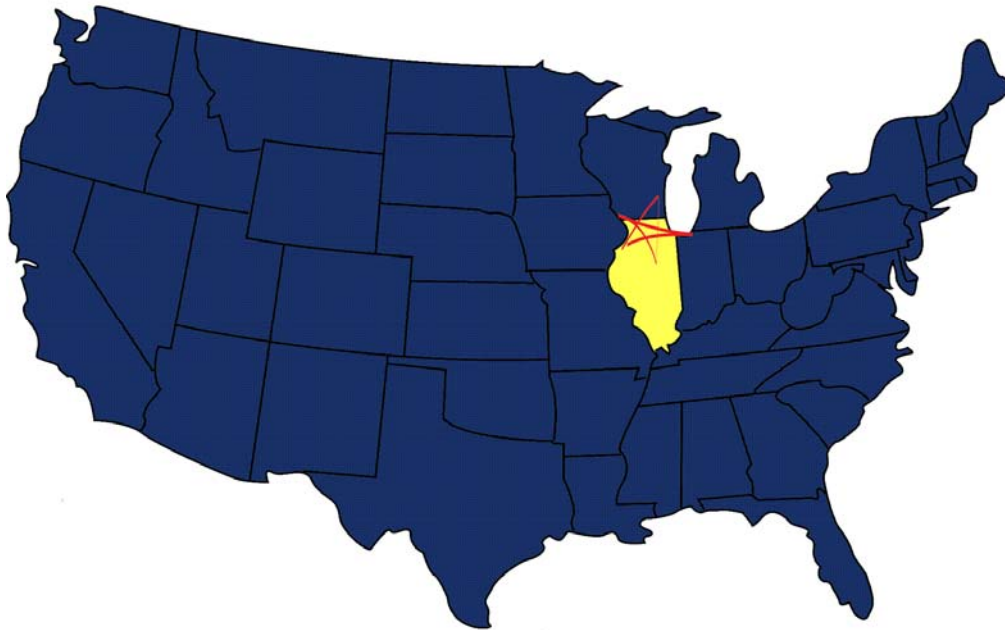
# Well Located with Excellent Access

## In the world, Illinois has:

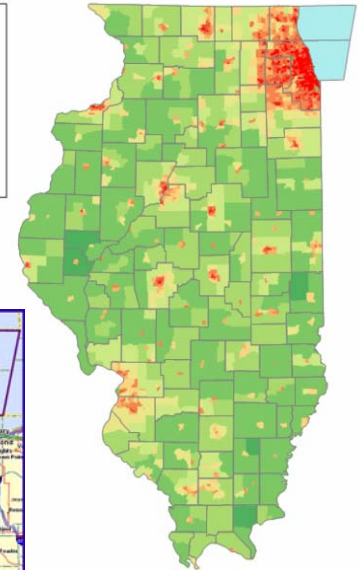
- 2<sup>nd</sup> busiest airport (O'Hare International)
- 3<sup>rd</sup> largest multi-modal port system

## In the US, Illinois is:

- 1<sup>st</sup> in Interstate and railroad connections
- 5<sup>th</sup> largest Economy (\$589b)
- 5<sup>th</sup> most populated state



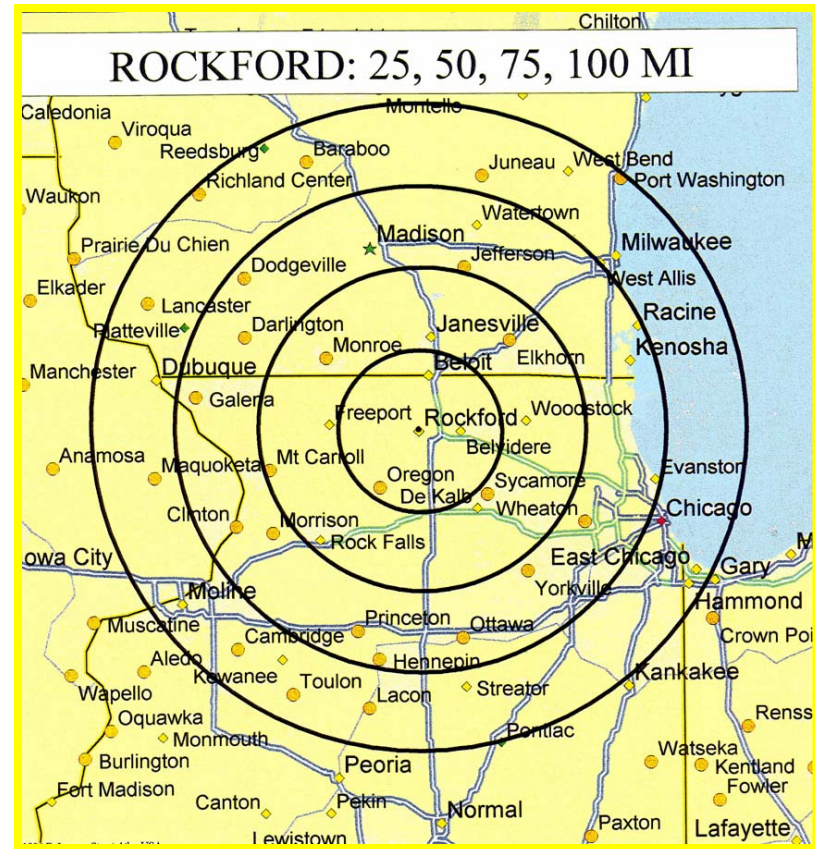
Source: U. S. Census Bureau  
Census 2000 Summary File 1  
population by census tract.



# Part of the Chicago Market

**Our strategic location provides access to:**

- Over 800,000 people within a 30-40 minute commute in the fastest growing region in Illinois
- Within 60 minutes of a world airport O'Hare International
- Chicago's Center Business District within 90 minutes
- Over 13 million people within a two hour drive
- 80% of US households are within a 24 hour truck drive



***Rockford is the 2<sup>nd</sup> largest central city in Illinois!***



# Robust Aerospace Cluster

Over 130 companies in the greater Rockford area supply products to the global aerospace industry. This robust aerospace manufacturing and aviation cluster attracts new investment to the region and expansion of current companies including...



# Clinkenbeard



# Industry Leading Center of Metal Working Excellence

## Concentrated Manufacturing Talent above the National Average:

- 7.2 times, Machinery Manufacturing employment and R&D
- 4.2 times, Metals Manufacturing and R&D
- 3.4 times, Transportation Equipment Manufacturing and R&D
- 1.5 times above the Illinois average in engineer employment

## Leading Manufacturing Community

- 1<sup>st</sup> in aerospace manufacturing in Illinois
- 2<sup>nd</sup> in manufacturing employment in Illinois
- 2<sup>nd</sup> in "on & off" road vehicle manufacturing in Illinois
- 2<sup>nd</sup> in industrial machine manufacturing in Illinois

*Nearly 25% of the Rockford area's workforce is employed in manufacturing, twice the national average.*



# Additional Aerospace Capabilities

Rockford's diverse aerospace cluster allows for specialty capabilities such as:

- Composite Materials
- Rapid Prototyping
- Power Management and Distribution
- MRO
  - Structural, turbine/engine
  - Systems: gyros & hydraulics
  - Small structural, turbine/engine
  - Paint
  - Gauges/Calibration
  - Seats & flotation devices
  - Aviation R&D
- Warehouse/Distribution and Logistics
- Advanced Manufacturing



# Abundant Qualified Available Labor Force

## Labor Availability The Pathfinders Report: (2007)

- 30-minute labor-shed population of over 800,000
- Estimated workforce of over 435,000 people
  - 65,500 people are underemployed
  - 16,800 unemployed
  - 46,200 employed but interested in changing employers
  - 2,500 not currently in workforce but considering re-entering

## Commuting Workforce -The Pathfinders Analysis (2007)

- Estimated 42,600 commute out of the Rockford Metro Area daily
  - 73% would consider taking a comparable job in the Metro Area.
  - Largest group, 15%, are tied to manufacturing

## Current (11/09) Unemployment Rate Rockford Metro Area:

- 15.7 %

*Rockford is the fastest growing Metro Area in Illinois.*



# Rockford Enjoys Good Labor Relations

The Rockford Area's labor quality is rated as above average in :

- Turnover
- Absenteeism
- Productivity
- Attitude
- Drug use
- Trainability
- Communications
- Basic skills

Labor availability is rated as above average for:

- Engineering
- Skilled
- Semiskilled
- Unskilled



# Abundant Educational Opportunities

There are over 75 universities in the region, many of which offer advanced aerospace and engineering degrees...



# Well Connected to the World

"I-39 has the distinct advantage of being the only interstate connecting the northern cluster of interstates (I-90, I-94, I-80, I-88) with the central cluster of interstates in Illinois (I-74, I-55, I-70, I-57, I-64)...."



"...As a result the highway system of the I-39 corridor is one of the most connected in the country for both domestic and international trade."

*--St. Onge Co.*



# Growing Available In-Land Port

## Integration of Air Cargo, Truck, and Rail Service:

- Four of the seven Class-one railroads
- Two of the largest air cargo aggregators
- Over 60 motor freight carriers



# Leading International Airport

## The Chicago/Rockford International Airport (RFD)

- 2nd fastest-growing air cargo airport in the US
- 19th fastest growing cargo airport in the world
- 18th largest cargo airport in the US
- 85th largest in the world for cargo tonnage

## Modern Facility

- 24/7 FAA Air Traffic Control Tower
- Hard-surface runways
  - 10,000 ft (Primary)
  - 8,200 ft (Secondary)
- Cat III/II Instrument Landing System
  - allows landing in zero visibility conditions
- International Arrival Gate
- U.S. Customs Port of Entry
- De-icing fluid retention and processing facility on-site



# Superior Amenities at RFD

## Capabilities

- Independent airspace from O'Hare, Midway, Chicago/Gary, Mitchell Field (Milwaukee)
- Accommodates largest aircraft flying
  - Airbus 380
  - Antonov 225
- Non-stop service to Europe, Africa, Asia, Middle East and South America

## Services

- Foreign Trade Zone #176
- 24/7 customs and federal inspections
- Multiple FBO's means a full spectrum of aviation related services
- USDA inspections
- 6,600 acres in the Global Trade Park
  - 3,000+ acres of airport land for development
  - 200+ airside acres
  - 2000+ acres for industrial and commercial projects



# Leading Air Cargo Services

## UPS

- 2<sup>nd</sup> largest US air hub
- Two-shift next day air service
- Multiple Flights
- Six expansions since 1994 – 570,000 sf
  - \$25m invested to increase throughput (2007)
  - \$7.5m added heavy freight (2006)



## BAX Global

- Began service at RFD 2000
- 25,000 sq. ft. regional sort facility
- Multiple daily flights



# The Chicago/Rockford International Airport (RFD)

## Cost Efficient

- Free, No Cost Aircraft Parking
- Landing fees 55% less expensive than O'Hare
- Centralized purchasing of fuel
- Limited toll road costs for ground transportation
- Less fuel burnt
  - Uncongested airspace means no stack time
  - Approximate 15 minutes from commit to land to cut engines
  - No congestion on roads
- Onsite Centralized Examination Station (CES), same day CES service available, one to two days faster than Chicago

FTZ Fact - If a company imports over \$1 million dollars of inventory annually, there is a very high likelihood that they could save a substantial amount of money. Some Rockford Area companies are realizing **savings in excess of \$250,000 annually** by beginning to utilize **FTZ benefits**.



# Available Air Cargo Center on Runway

## Full Build-Out:

- 400,000 sf
- 30 acres
- 14 - 747 size spaces



## Phase One:

- Building Size: 72,000 SF
- Clear Height: 28 feet
- Aircraft Parking: To Suit
- Electrical: 1200 Amps, 480/277 Volts
- Parking: 100 Cars - Expandable
- Trailer Parking: Available
- Drive-In Doors: 4 - grade level, 16' x 20'
- Exterior Truck Docks: 20, fully equipped
- Occupancy: 1<sup>st</sup> Quarter (2009)



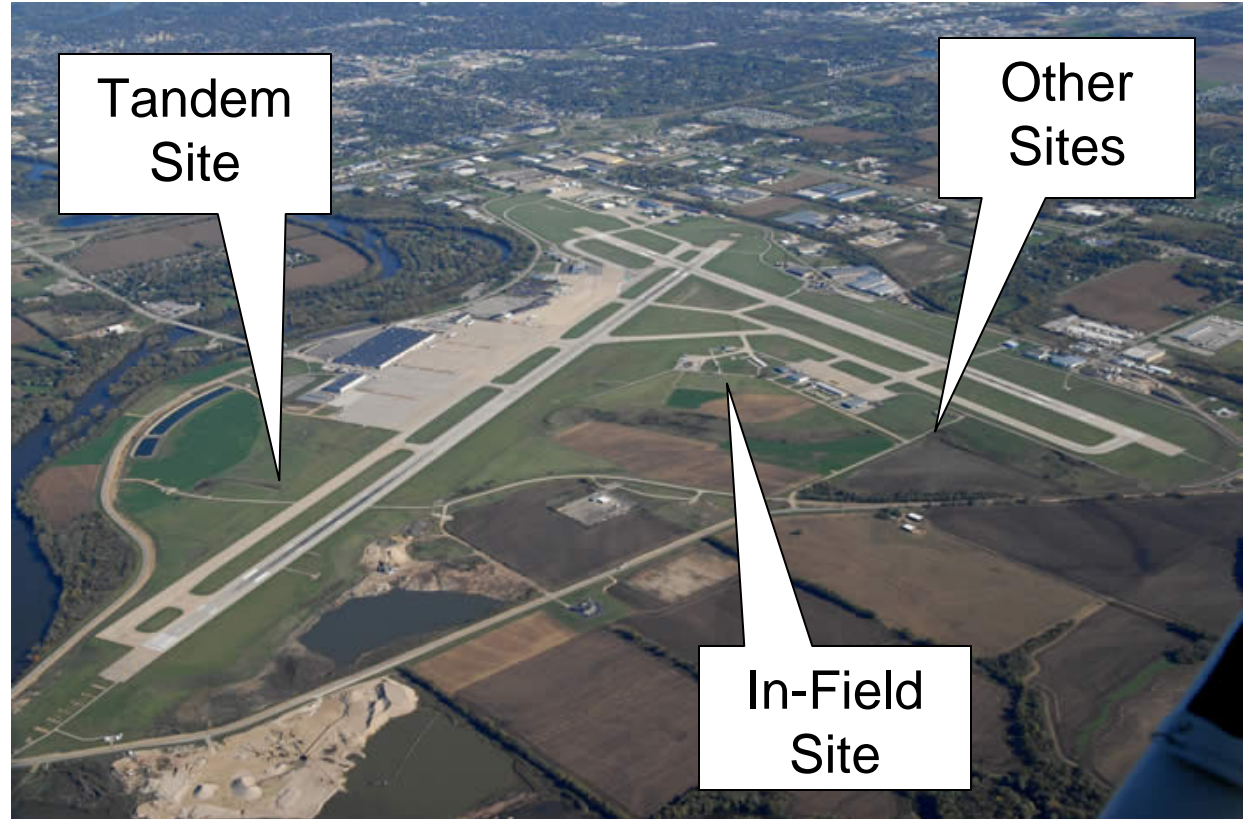
# Modern Expandable Air Cargo Center



# Multiple Development Opportunities

## RFD

- Multiple sites available
- Direct runway access



# Nearby Interstate Access Development

## Nordic Development

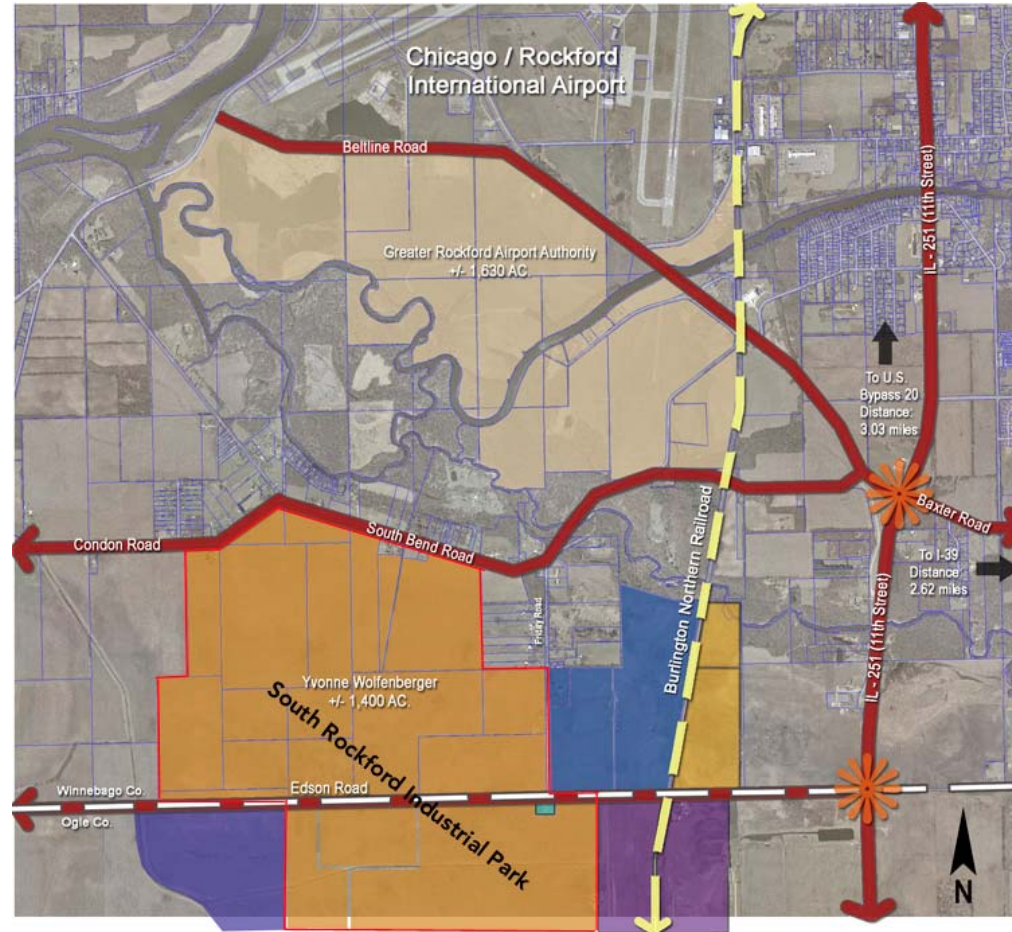
- 168 acre development at entrance to Chicago/Rockford International Airport
- TIF and Enterprise Zone Benefits
- Interstate/US Highway visibility
- Ideal for non-airside airport uses, corporate, commercial, warehouse & distribution and light Manufacturing



# Heavy Industry and Rail Served Development

## South Winnebago County Industrial Park

- 1500 acres
- Rail Served: ICE, Illinois Railway, UP, BNSF, CN, CP
- Ideal for heavy/rail-oriented manufacturing, rail-related distribution, warehouse & distribution, rail services, and alternative energy production



# Superior Affordable Quality of Life

- More than 7,000 parkland acres
- 185 public parks
- 21 public golf courses
- 6 country clubs
- 9 public libraries
- 10 museums
- 12 art galleries
- 1 symphony orchestra
- 4 community theatres
- 2 indoor ice arenas
- 2 water parks
- 4<sup>th</sup> lowest cost of living in the Midwest



*Rockford is home to the Rockford IceHogs AHL hockey team, official farm team for the Chicago Blackhawks.*



# Rockford is an International City



The Keeling-Puri Peace Plaza.

We welcome you to explore for yourself and join this growing international region

- Top in ethnic diversity in Illinois
- Seven Sister Cities
- International Gate at Airport
- Significant number of Rockford-area businesses involved in international trade
- Immigration Services
- FTZ #176
- Above average export growth
- Growing Foreign Direct Investment from multiple countries
- Immigration through Investment EB-5 Visa Regional Center



# Rockford

I L L I N O I S  U S A

ROCKFORD AREA ECONOMIC DEVELOPMENT COUNCIL

