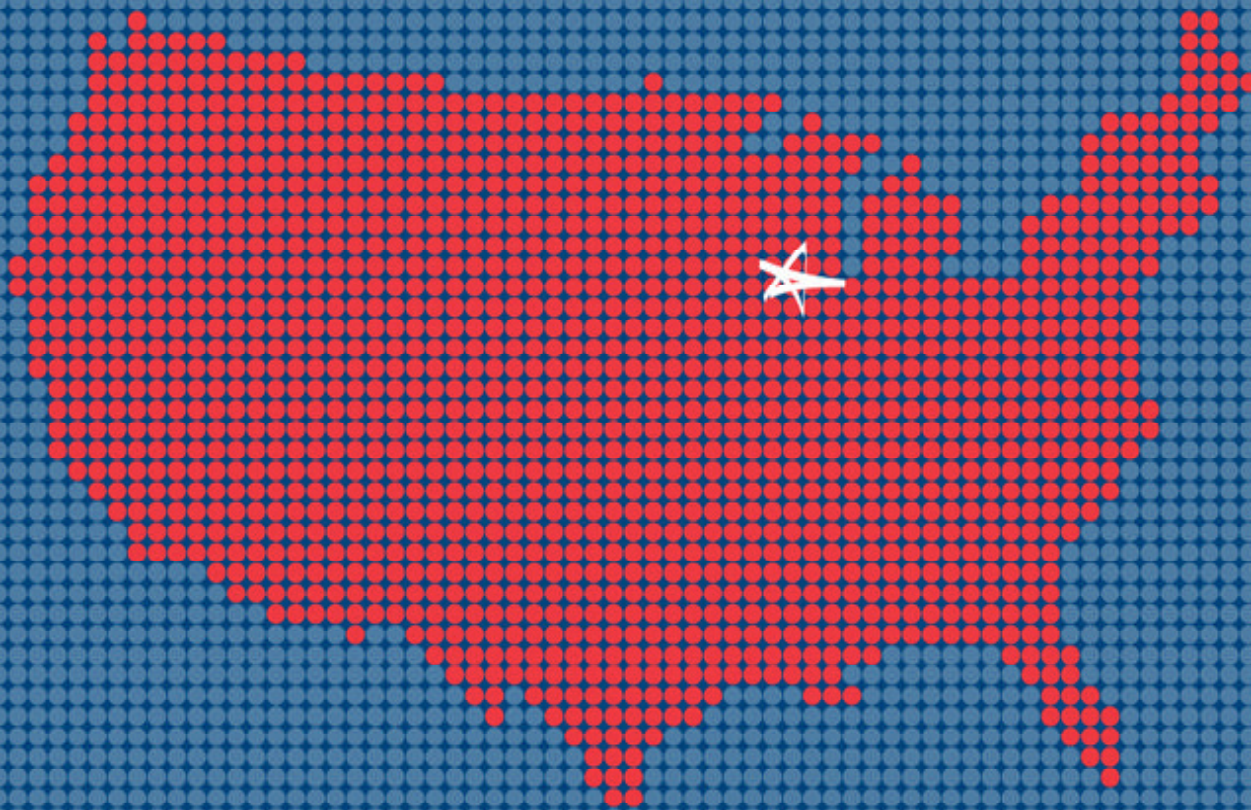
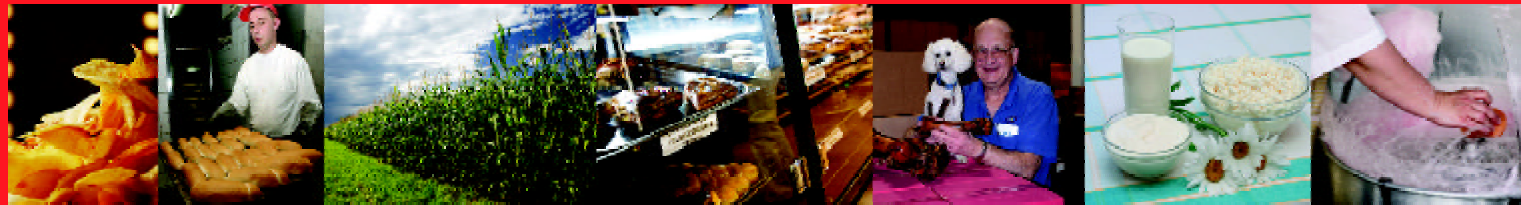


# Food Processing



Rockford

ILLINOIS  USA

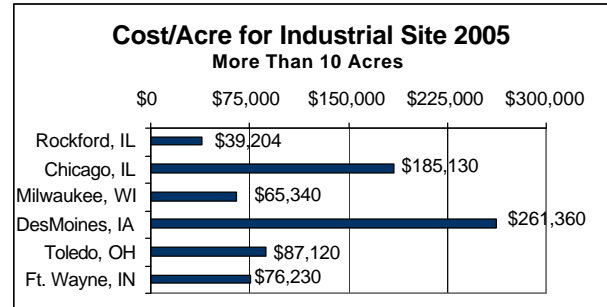
ROCKFORD AREA ECONOMIC DEVELOPMENT COUNCIL

# Welcome to Rockford, Illinois...

...part of the 3rd largest economic corridor in the United States! Just 1.5 hours from Chicago's O'Hare International Airport and 30 minutes north of the new Union Pacific intermodal hub, the Rockford Region provides easy access to markets with low transportation costs.

## Rockford Region Advantages

- The region is served by 3 interstate, 2 federal and 9 state highways
- The I-39 corridor links to other corridors, including I-90/94, I-80, I-88 and I-74
- The Rockford Region affords excellent proximity to supply chain partners
- The Rock River provides an excellent and abundant source for wastewater treatment and sanitized return
- The area offers low cost of fully-improved industrial sites
- Low regional cost of doing business
- High quality of life with low cost of living and housing costs affords the workforce greater purchasing power



## Purchasing Power Comparison of Comparable Regions

Region	Average Annual wages	Median housing Value	Cost of Living	Purchasing Power	Winnebago Comparison
Winnebago County, IL	\$44,054	\$105,810	88.2	<b>\$51,081</b>	
Essex County, MA	\$48,277	\$319,815	145.3	<b>\$22,257</b>	-35%
Hamilton County, OH	\$42,952	\$131,513	87.8	<b>\$48,920</b>	-6%
Imperial County, CA	\$44,658	\$158,117	188.7	<b>\$23,666</b>	-54%
Jefferson County, CO	\$45,198	\$238,726	110.4	<b>\$40,940</b>	-20%
Lake County, OH	\$43,742	\$127,481	183	<b>\$23,902</b>	-53%

Source: Regional Development Institute, NIU Outreach, Northern Illinois University

## Workforce: Dedicated & Productive

- The region has significantly higher productivity in both sugar and confectionary products and animal food manufacturing than in both Illinois and the U.S.
- The local industry experiences low labor stress
- The area offers good workforce availability - over 325,000 within a 30 mile radius
- There is a high quality workforce able to work independently and responsibly
- The area boasts midwest regional values and a strong work ethic

## Colleges & Universities

Training opportunities exist with regional colleges and universities, including:

- Northern Illinois University (NIU) - > 5,400 undergraduate and graduate degrees granted annually;
  - NIU-Rockford (branch)
  - Rockford College - > 400 degrees granted annually
  - Rock Valley College - > 2,000 degrees granted annually
- as well as over 75 other regional colleges and technical schools.

## Rockford Area Food Processing Companies

The region is currently home to over 30 food processing companies, employing over 2,500 people.

### Area Food Processing Companies

Cherry Valley Feed Supplies  
Dean Pickle Specialty Products  
Eickmans Processing Co. Inc.  
Dean Foods Company  
Ole Salty's  
Piemonte Bakery Company Inc.  
Roma Bakery  
Mrs Fishers Inc  
Bay State Milling Company  
J&J Fish  
Penguin Foods  
Cadbury Adams  
Holsum Bread  
Muller-Pinehurst Dairy Inc.  
Coutryside Deer  
Interstate Bakery's Corp  
Kent Feeds Inc

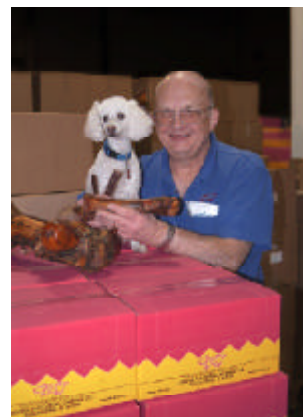
Phelps Industries LLC  
Stella Baking Company  
7-Up The American Bottling Co.  
Jays Foods Inc  
Pepsico  
Th Foods Inc  
Schwans Home Service Inc  
Rockford Poultry Inc  
Wengers Springbrook Cheese  
Spectrum Preferred Meats  
Rochelle Foods Inc  
Ralcorp Holdings Inc  
Kraft Foods Global Inc  
General Mills Inc  
Erie Foods International Inc  
BayValley Foods  
Jones Natural Chews

## Recent Announcements

Gourmet dog treat company re-locates to Rockford; expects 63% increase in workforce

Ralcorp subsidiary Bremner opens private-label cracker and cookie plant in South Beloit; 50 new jobs created

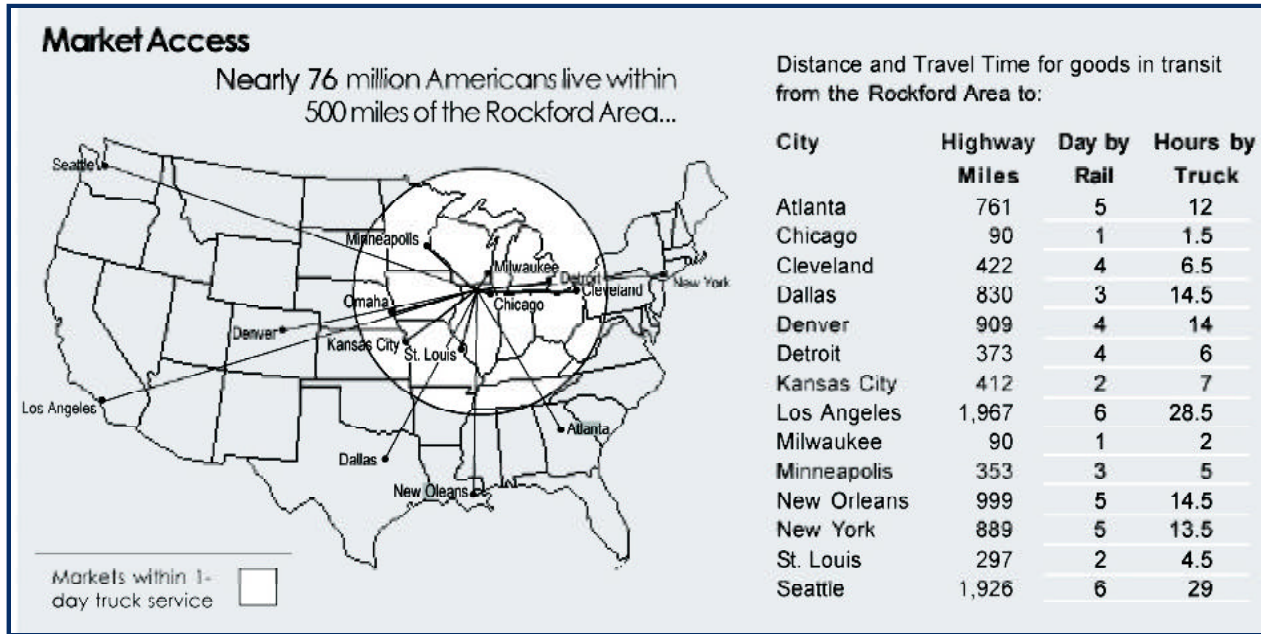
Robert Jones, President  
Jones Natural Chews



# Why Rockford, Illinois?

Location, location, location!

The Rockford, IL region is strategically located in the heart of the Midwest, providing excellent access to markets via 3 interstate, 2 federal and 9 state highways.



## We're Here to Help You

Looking for a place to locate or expand a business? Visit [rockfordil.com](http://rockfordil.com) today. Almost everything you need to know about Rockford's business advantages can be found there. In partnership with other public and private enterprises, the Rockford Area Economic Development Council markets the Rockford area and helps employers retain and create quality jobs. We will gladly help you facilitate your search and smoothly interface with governmental agencies. Call 815.987.8118 or email president Janyce Fadden at [jfadden@rockfordil.com](mailto:jfadden@rockfordil.com), VP of national business recruitment Eric Voyles at [evoyles@rockfordil.com](mailto:evoyles@rockfordil.com), or VP of development Mark Podemski at [mpodemski@rockfordil.com](mailto:mpodemski@rockfordil.com)

